

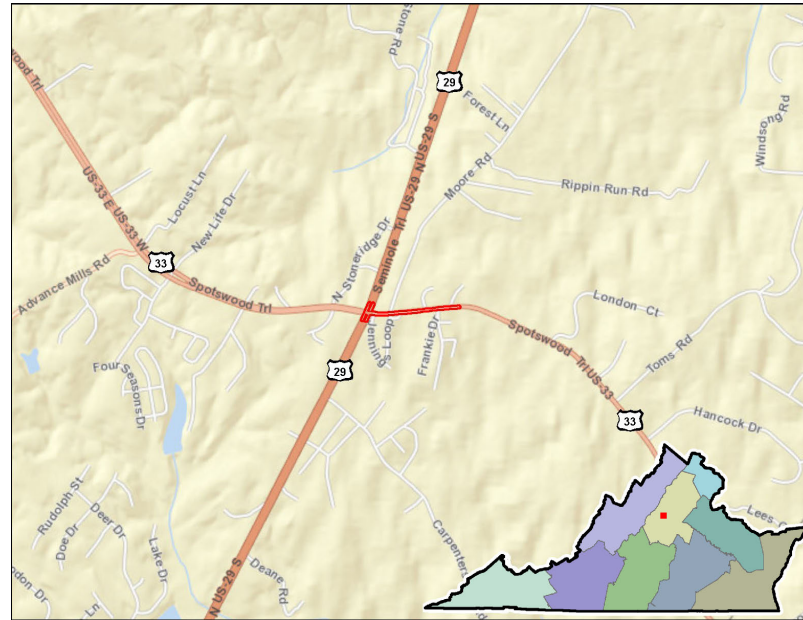
## PROJECT SCORECARD

Route 33 at Route 29 Ruckersville Road Improvement

App Id: 725

The project reconstructs 0.64 miles Route 33 in Greene County from Route 29 eastward and includes additional travel lanes, entrance consolation, turn lanes, sidewalk, multi-use trail and a raised median.

Project Location .....	Greene County
HB2 Area Type .....	C
Submitting Entity .....	Greene County
Total Project Cost .....	\$10,100,000
HB2 Request .....	\$10,100,000
Preliminary Engineering .....	Not Started
Right of Way .....	Not Started
Construction .....	Not Started
Expenditures to Date .....	N/A
Key Fund Sources .....	N/A
Administered By .....	VDOT
Eligible Funding Program(s) .....	Both



### Performance

VTrans Need: Seminole Corridor of Statewide Significance

[Click for details](#)

### Project Benefit Score

1.9

### HB2 COST TOTAL COST

Final Score

1.9

1.9

Statewide Rank

144/287

122/287

District Rank

9/17

8/17

Congestion Mitigation		Safety		Accessibility			Environment		Economic Development			Land Use
15% of score		25% of score		25% of score			10% of score		25% of score			N/A
50%	50%	50%	50%	60%	20%	20%	50%	50%	60%	20%	20%	N/A
Increase in Daily Person Throughput	Decrease in Person Hours Delay	Reduction in Fatal and Severe Injury	Reduction in Fatal and Severe Injury Rate	Increase in Access to Jobs	Increase in Access to Jobs for Disadvantaged Populations	Improved Access to Multimodal Choices (Users Benefit Value)	Air Quality (Total Benefit Value)	Acres of Natural/Cultural Resources Potentially Impacted	Economic Development Support (Sq. ft.)	Intermodal Access Improvements (Tons Benefit Value)	Travel Time Reliability Improvement	Transportation Efficient Land Use
1.6	0.1	4.3	3.7	0	0	0	0	8.0	0.8	1.5	3.6	